



HAND PUSH SEEDER MACHINE

د هند پوش سپر ماشین

PERFORMANCE AND CHARACTERISTICS OF SEEDERS

1. This product is applicable to the ploughed land with or without ridge in plain, mountainous area and hill.
2. The hand-propelled seeding in a rolling manner is easy and efficient, and environmental-friendly.
3. The transparent polycarbonate engineering plastic used make the seeding can be directly seen and is solid and durable.
4. The design is scientific and the seeding is accurate. The planting distance and density can be adjusted at any time according to requirement.

Suitable seeds:	maize, beans, peanuts, cotton, sunflaw seeds etc.(like round seeds)
Model No.	AGM/HPS/P2
Function:	plant maize, beans and other grain seeds into no-tilled soil
Hole seeding rate:	1-2 adjustable
Seeding depth:	35-78mm
Work efficiency:	0.55-2hajday or more
Seeds Box:	3.7 kg
Space(seed to seed):	20cm-30cm(can adjust)
Spike number:	7(can adjust)

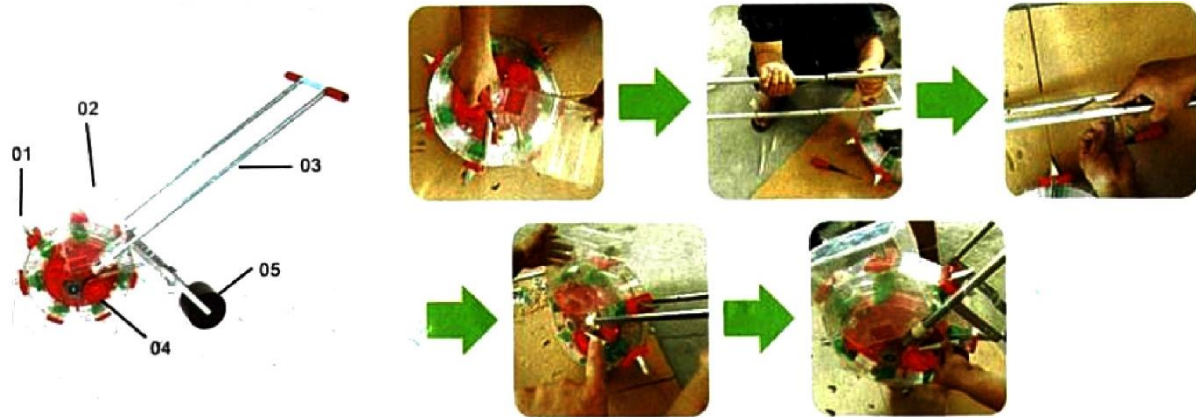
PRECAUTIONS:

1. Move forward according to the direction pointed by arrow and the speed shall not be too fast.
2. After the seed is selected and put into it, the machine shall be normally idled for a circle before being used for seeding.
3. Adjust the handle and soil spreading plate spring to ensure the soil spreading and pressing effect of seed.
4. Clean and dry the machine and oil bearing and iron nozzle after the use.



Structure Diagram of Hand Push Machine

AA: Hand push seeder Machine installation diagram



- 01: Seed Nozzle
- 02: Seed Box
- 03: Seeder Handle

- 1: Loosen the screw of the pressing plate
- 2: Install the seeder handle
- 3: Install the press wheels

HOW TO CHANGE TO THE SEEDS WHEELS.

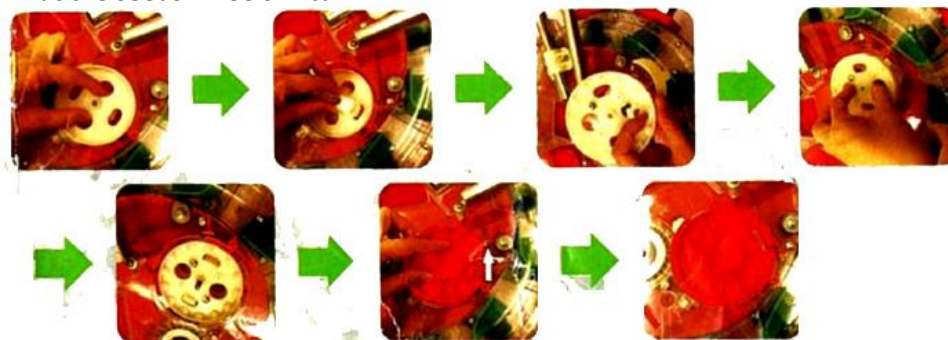
1. Rotate the reseed connecting rod to off position and screw off reseed cap.



2. Take out the seeds wheels in turn.



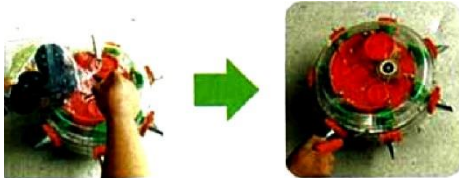
3. Put the seeds wheels in turn



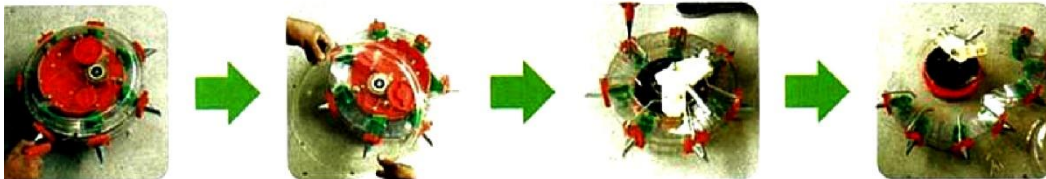


HOW TO CHANGE THE SEED TO SEED DISTANCE 7 TO 6

- 1: Remove the seed box



- 2: Loosen the seeders front and back sign no. 7 screw



- 3: Use the short plastic rods connects two side covers



- 4: Put two side covers on the seeder disc, and fix with a screw on the sign no. 6 and use the short plastic Connect the side covers and put on the seeder in turn.



- 5: Use the short plastic rods connects two side covers and put on the seeder in turn, and fix with a screw on the sign no. 6 last put the seed box on the seeder and fix screw.



HOW TO CHANGE THE SEED TO SEED DISTANCE 6 TO 5

- 1) Remove Seeds

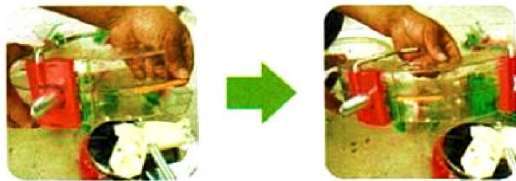


- 2) Loose the seeders front and back sign no. 6 screw





03: Use the long plastic rods Connect



04: Put two side covers on the seeder disc, and fix with a screw on the sign No.:5 and Use the long plastic rods Connect the side covers and put on the seeder in turn



05: Use the long plastic rods Connect the side covers and put on the seeder in turn, and fix with a screw on the sign No.:5, then put the seed box on the seeder and fix screw



06: The last put the plastic nozzles on between the two nozzles, and fix with the screw



ITEM NO.:	SIDE	FRONT	FOR SEEDS	ITEM NO.:	SIDE	FRONT	FOR SEEDS
NO. : 0			No seeds	NO. : 5			corn, beans, cotton (like round seeds)
NO. : 1			Vegetables, small beans	NO. : 4			corn, beans, cotton (like round seeds)
NO. : 44			corn, beans (like round seeds)	NO. : 66			peanuts, beans
NO. : 11			corn, beans, cotton (like round seeds)				put like similar these 2 kinds of seed wheels in miachina will out 1 seeds for each nozzle
NO. : 2			beans				put like similar these 2 kinds of seed wheels in miachina will out 2 seeds for each nozzle
NO. : 3			beans, cotton (like round seeds)				put like similar these 2 kinds of seed wheels in miachina, the seed to seed space will chang double
NO. : 33			corn, beans, cotton (like round seeds)				